

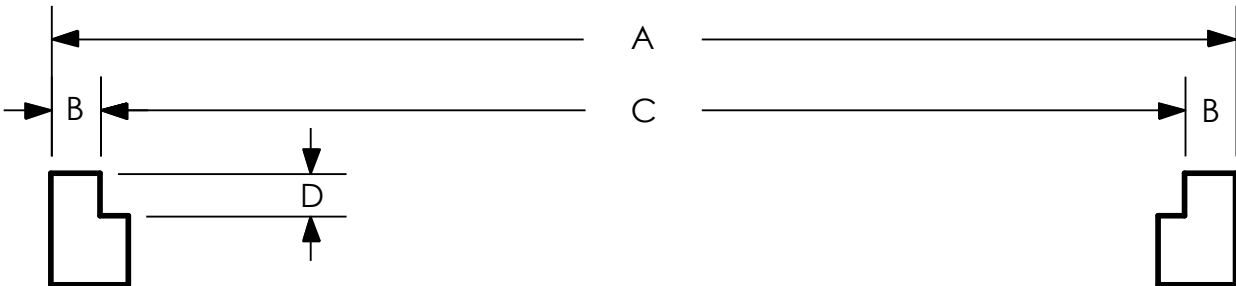
Specifications

Customer:
Company:
Project:
Location:

Fax:
Date:
PO#:
SMP#:

	LEVEL 1	LEVEL 2	LEVEL 3	LEVEL 4	LEVEL 5	LEVEL 6	LEVEL 7	LEVEL 8	LEVEL 9
RACK DEPTH									
A									
B									
C									
D									
BEAM LENGTH (CLEAR)*									

* DECK WIDTH ALONG THE RACK BEAM IS ON A 6" REPEATING PATTERN AND WHEN INSTALLED IS TYPICALLY 1-2" LONGER THAN DIMENSIONS PROVIDED IN THE PROPOSAL. THIS MAY REQUIRE NOTCHING AROUND UPRIGHTS IN THE FIELD OR YOU MAY SPECIFY 6" LESS OF COVERAGE.



Choose one of the conditions below:

- Condition 1 (Recommended): Summit will deduct 1/8" from C dimension. Published allowable uniform total loads are based on this situation.
- Condition 2: Summit will deduct 1/4" from C dimension. Applicable when there is variance in the rack beams causing the C dimension to be inconsistent. The C dimension variance must be less than 1/8".

Signature (required): _____ Date: _____

THANK YOU FOR YOUR BUSINESS